



FLORIDA DEPARTMENT OF TRANSPORTATION - DISTRICT FOUR INVITES YOU TO A CONSTRUCTION OPEN HOUSE

US 1/State Road (SR) 5 Shoulder Widening and Resurfacing Project

From South of SE Heritage Boulevard to North of SE Salerno Road

Financial Project ID Number: 437838-1-52-01

US 1/SR 5 Shoulder Widening and Resurfacing Project

The Florida Department of Transportation (FDOT) District Four, will host a Construction Open House for the US 1 shoulder widening and resurfacing project from south of SE Heritage Boulevard to north of SE Salerno Road in Martin County.

PROJECT IMPROVEMENTS

- Milling and resurfacing of all travel lanes, turn lanes, and shoulders
- Widening the shoulders to accommodate 7-foot buffered bicycle lanes
- Addressing pavement failures at Cove Road and Salerno Road
- Upgrading sidewalk and pedestrian ramps to meet American with Disabilities Act (ADA) standards
- Upgrading signing and pavement markings
- Installing new pedestrian countdown signal heads at multiple signalized intersections
- Upgrading traffic controller cabinets at all signalized intersections
- Installing lighting improvements at Salerno Road and Cove Road intersections

JOIN US AT THE CONSTRUCTION OPEN HOUSE

Wednesday, August 28, 2019

Open House - 4:30 p.m. - 6:30 p.m.

Robert Morgade Library

Anderson Community Room

5851 SE Community Drive

Stuart, FL 34997

Project personnel will be on hand to discuss the scope of work, construction schedule, and address questions and comments one-on-one. The open house will have an informal format. No formal presentation will be made. Guests may arrive at any time between 4:30 p.m. and 6:30 p.m.

TRAFFIC IMPACTS

To facilitate soil stabilization and reconstruction at the Salerno Road/US 1 and Cove Road/US 1 intersections, work will occur in phases to minimize the impacts to traffic. During certain phases, the speed limit on US 1 will be reduced from 45 MPH to 35 MPH.

Turn lanes and through lanes at the Salerno Road/US 1 and Cove Road/US 1 intersections will undergo full closures during various timeframes as part of a multi-phase operation. Through traffic on US 1 may be reduced from three lanes to two lanes,

but US 1 will never be fully closed. Some turn movements coming from US 1 to turn onto either Salerno Road or Cove Road will be restricted at times. Alternate detour routes will be available.

Advance notice will be provided to the public prior to any closures via message boards, press releases, and flyers, and will include the specific impact as well as the anticipated duration of the impact. **Please see the reverse side to view the phase details that have major impacts to traffic.**



CONTACT INFORMATION

Kathleen Dempsey, Community Outreach Specialist: kdempsey@corradino.com or (772) 359-5118

Ana Pombal, P.E., Project Administrator: apombal@cpc-eng.com or (561) 214-0781

Tim Thomas, FDOT Project Manager: tim.thomas@dot.state.fl.us or (772) 429-4887

Construction Cost: \$8,446,060

Construction Start: September 16, 2019

Anticipated Completion: Spring 2021

Public participation is solicited without regard to race, color, national origin, age, sex, religion, disability, or family status. Persons who require special accommodations under the Americans with Disabilities Act (ADA) or persons who require translation services (free of charge) should contact FDOT Project Manager Tim Thomas or Community Outreach Specialist Kathleen Dempsey at least seven (7) days prior to the Open House.

Phase 1: Salerno Road and US 1



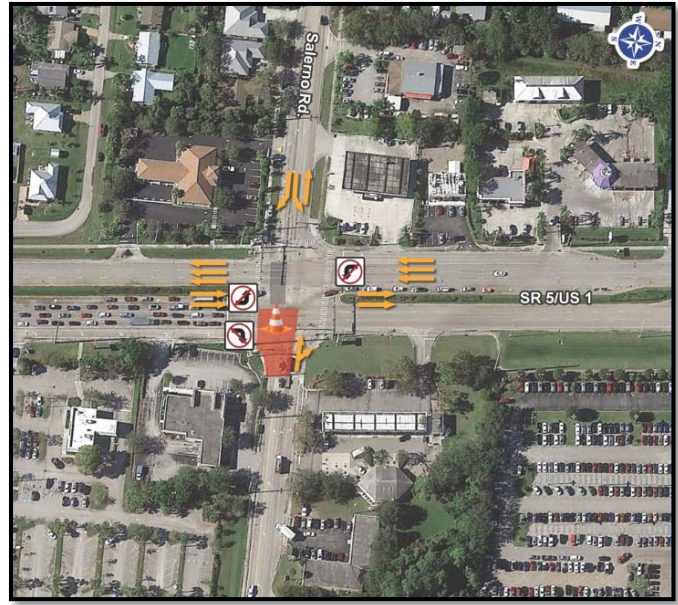
US 1 Restrictions

- Turn Movement: SB US 1 to EB Salerno Road
- Turn Movement: NB US 1 to WB Salerno Road
- NB and SB US 1 down from 3 to 2 lanes

Salerno Road Restrictions

- Through Movement: EB Salerno Road through the US 1 intersection
- Turn Movement: WB Salerno Road to SB US 1
- Turn Movement: EB Salerno Road to NB US 1

Phase 2: Salerno Road and US 1



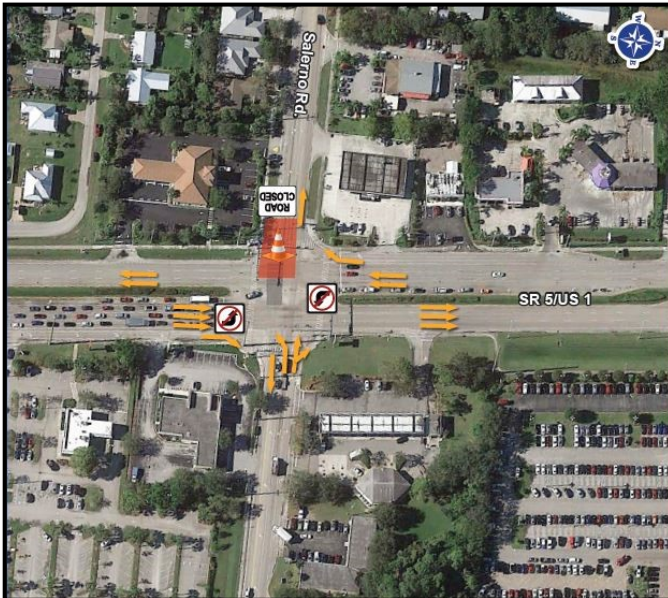
US 1 Restrictions

- Turn Movement: SB US 1 to EB Salerno Road
- Turn Movement: NB US 1 to EB Salerno Road
- Turn Movement: NB US 1 to WB Salerno Road
- NB US 1 down from 3 to 2 lanes

Salerno Road Restrictions

- Through Movement: EB Salerno Road through the US 1 intersection

Phase 3: Salerno Road and US 1



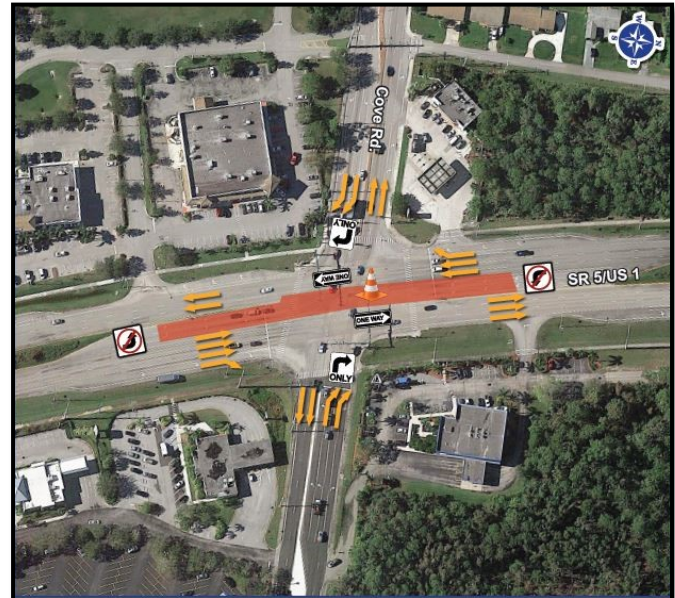
US 1 Restrictions

- Turn Movement: SB US 1 to EB Salerno Road
- Turn Movement: NB US 1 to WB Salerno Road
- SB US 1 down from 3 to 2 lanes

Salerno Road Restrictions

- All Turn & Through Movements:
 - EB Salerno Road through the US 1 intersection
 - EB Salerno Road to NB US 1
 - EB Salerno Road to SB US 1

Phase 7: Cove Road and US 1



US 1 Restrictions

- Turn Movement: SB US 1 to EB Cove Road
- Turn Movement: NB US 1 to WB Cove Road
- SB US 1 down from 3 to 2 lanes

Cove Road Restrictions

- Turn Movement: EB Cove Road to NB US 1
- Through Movement: EB Cove Road through the US 1 intersection
- Turn Movement: WB Cove Road to SB US 1
- Through Movement: WB Cove Road through the US 1 intersection

PROJECT UPDATES

To receive project-specific updates, including information regarding these upcoming closures, please send a request to Community Outreach Specialist, Kathleen Dempsey, via email at kdempsey@corrado.com to be added to the project distribution list.

FLORIDA DEPARTMENT OF TRANSPORTATION MISSION STATEMENT

The Department will provide a safe transportation system that ensures the mobility of people and goods, enhances economic prosperity, and preserves the quality of our environment and communities.