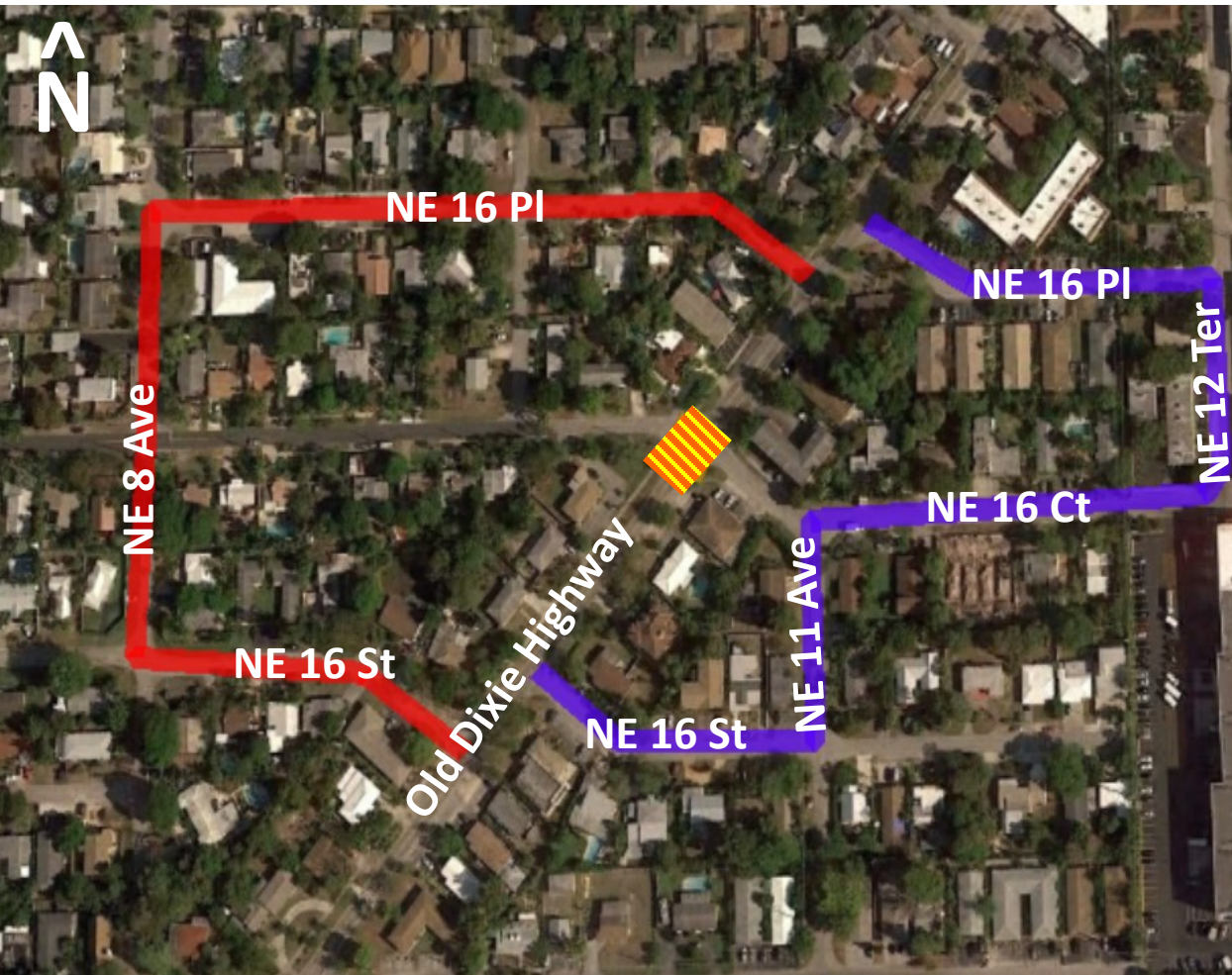




Old Dixie Highway Improvements Project from NE 13 Street to the Middle River Bridge in Fort Lauderdale

Roundabout Construction at NE 16 Court

October and November 2017



Crews will be constructing the new roundabout at NE 16 Court beginning in late October through mid-November. In order to complete this work, Old Dixie Highway at NE 16 Court will be closed continuously for 72 hour intervals on the following days:

October 23—October 25

October 30—November 1

November 6—November 8

Detour signage will be in place to direct motorists around the work zone.

For more information visit

www.d4fdot.com/bcfdot or contact

Dayana Diaz, Community Outreach Specialist
at (954)290-5989 or ddiaz@corradino.com
or David Schweiger, FDOT Project Manager
at (954) 940-7522



Work Zone

Detour:



Northbound — NE 16 Street, NE 11 Avenue, NE 16 Court, NE 12 Terrace, and NE 16 Place to Old Dixie Highway

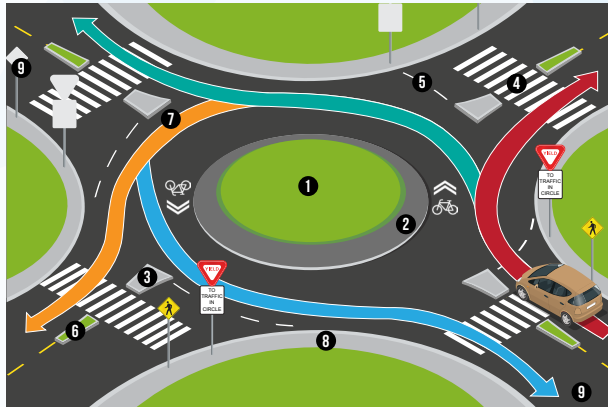


Southbound — NE 16 Place, NE 8 Avenue, and NE 16 Street to Old Dixie Highway

Created October 12, 2017

WHAT IS A ROUNDABOUT?

A Roundabout is a one-way circular intersection without traffic signal equipment in which traffic flows around a center island that operates with yield control at the entry points, and gives priority to vehicles within the Roundabout.



- 1 Central Island
- 2 Concrete Truck Apron
- 3 Pedestrian Refuge
- 4 Crosswalk
- 5 Yield Line
- 6 Splitter Island
- 7 Circulatory Roadway
- 8 Sidewalk Around Perimeter
- 9 Exit Lanes and Entry Lanes

ROUNDABOUT SIGNS



**SPEED
LIMIT
15**

Slow down when approaching a roundabout.



Watch for pedestrians.



Yield to traffic already in the roundabout.



Stay to the right of the splitter island.



Travel in a counterclockwise direction only.

For questions contact

Dayana Diaz, Community Outreach Specialist at (954)290-5989 or ddiaz@corradino.com or David Schweiger, FDOT Project Manager at (954)940-7522



Broward MPO
Metropolitan Planning Organization



Old Dixie Highway Improvements Project

A Guide to Roundabouts



A roundabout will be installed at the intersection of Old Dixie Highway and NE 16 Court in October and November 2017. Roundabouts have been shown to calm traffic and improve roadway safety and aesthetics.

www.d4fdot.com/bcfdot

HOW TO DRIVE A ROUNDABOUT

- 1 Slow down as you approach the roundabout.
- 2 Yield to pedestrians and bicyclists crossing at the designated crosswalk.
- 3 Look to your left and yield to traffic already in the roundabout.
- 4 Enter the roundabout when there is a safe gap in traffic.
- 5 Use your right turn signal before you exit the roundabout.

Bicyclists have 2 options:

- 1 Merge with traffic and circulate as a vehicle.
- 2 Use sidewalk and crosswalks.



The roundabout at Old Dixie Highway and NE 16 Court **WILL NOT** support semi-truck access. Please re-direct semi-trucks to NE 4 Avenue.



BENEFITS OF A ROUNDABOUT

Conventional intersections have 32 vehicle and 16 pedestrian conflict points, while roundabouts have only 8 vehicle and 8 pedestrian conflict points. Because there are no crossing movements in a roundabout, left-turn and right-angle crashes are eliminated.

SAVES LIVES

- Up to a 90% reduction in fatalities
- 75% reduction in injuries
- 10-40% reduction in pedestrian / bicycle crashes
- 75% fewer conflict points than four-way intersections



EFFICIENT TRAFFIC FLOW

- 30-50% increase in traffic capacity

REDUCTION IN POLLUTION AND FUEL USE

- Improved traffic flow for intersections that handle a high number of left turns
- Reduced need for storage lanes

COMMUNITY BENEFITS

- Traffic calming
- Aesthetic landscaping

Source: Federal Highway Administration