



FLORIDA DEPARTMENT OF TRANSPORTATION – DISTRICT FOUR PUBLIC INFORMATION FLYER

SR 710/ Beeline Highway (east of Pratt and Whitney Main Entrance to east of the CSX Railroad Tracks)
Resurfacing, Restoration, and Rehabilitation
Palm Beach County, Florida
Financial Project ID: 446097-1-52-01

The Florida Department of Transportation (FDOT), District Four, is pleased to provide information about the proposed resurfacing, restoration, and rehabilitation project along SR 710 (Beeline Highway) from east of Pratt and Whitney Main Entrance to east of the CSX Railroad Tracks in Palm Beach County, Florida. No public information meeting is scheduled for this project.

PROPOSED IMPROVEMENTS

- Repave roadway in order to extend the pavement life.
- New highway signing and pavement markings (including rumble strips).
- Add internally illuminated street name signs at the signalized intersections.
- Upgrade lighting by replacing the existing High-Pressure Sodium (HPS) luminaires with Light-Emitting Diode (LED) luminaires.

CONSTRUCTION INFORMATION

- Construction Start Date: **Winter 2022**
- Anticipated Completion: **Winter 2023**
- Construction Cost Estimate: **\$2.6 million**



CONSTRUCTION IMPACTS

- A single lane of traffic will remain open during construction for both the eastbound and westbound directions.
- All work will be done in phases to reduce the impacts of construction on the community.

For more information, please visit:

Website: www.d4fdot.com/pbfdot/future_projects_index.asp



Follow us:



www.facebook.com/MYFDOTSEFL/



[@MyFDOT_SEFL](https://twitter.com/MyFDOT_SEFL)

CONTACT INFORMATION

Thuc Le, P.E., FDOT Project Manager

Florida Department of Transportation, District Four

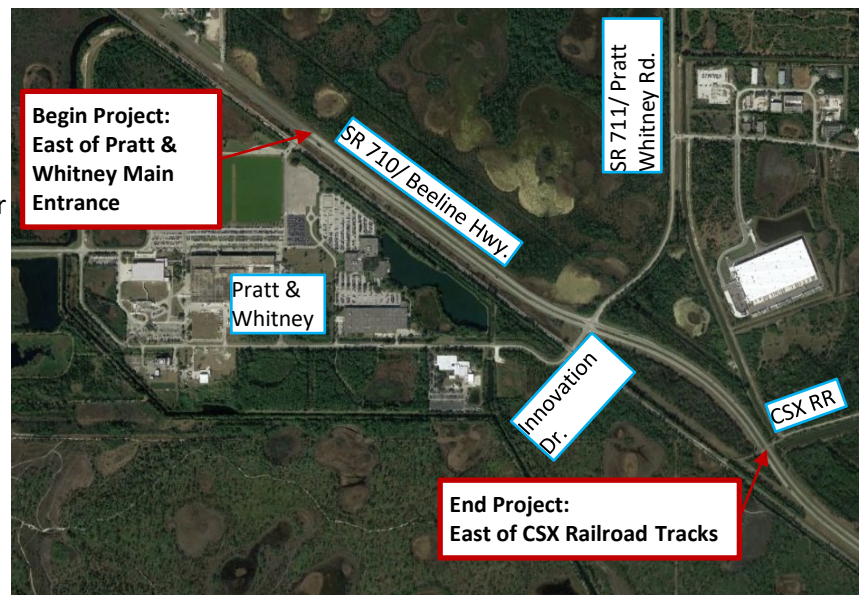
3400 West Commercial Boulevard

Fort Lauderdale, Florida 33309

E-mail: Thuc.Le@dot.state.fl.us

Phone: (954) 777-4552

Toll Free (866) 336-8435, Ext. 4552



FLORIDA DEPARTMENT OF TRANSPORTATION MISSION STATEMENT

The Department will provide a safe transportation system that ensures the mobility of people and goods, enhances economic prosperity and preserves the quality of our environment and communities.

Public participation is solicited without regard to race, color, national origin, age, sex, religion, disability or family status. Persons who require special accommodations under the Americans with Disabilities Act (ADA) or persons who require translation services (free of charge) should contact Thuc Le, P.E., Project Manager.



ROAD CONSTRUCTION TO BEGIN

**SR 710/ Beeline Highway (east of Pratt & Whitney to east of the CSX Railroad Tracks)
Resurfacing, Restoration and Rehabilitation**

**Drinking
and Driving
Don't Mix!**



Florida Department of Transportation
District 4 Traffic Operations
Attn: Thuc Le, P.E.
3400 W Commercial Blvd., Fort Lauderdale, FL 33309

