



FLORIDA DEPARTMENT OF TRANSPORTATION

TRAFFIC DETOURS FOR DRAINAGE WORK

SW Port St. Lucie Boulevard Widening Project

South of SW Alcantarra Boulevard to South of SW Darwin

Boulevard in the City of Port St. Lucie, FL

Financial Project ID Number: 431752-6-52-01



Full Closure of SW Rice Avenue for Drainage Work, Nov. 27-Dec. 1

The City of Port St. Lucie, as Project Sponsor, requested that the Florida Department of Transportation (FDOT) design and construct the SW Port St. Lucie Boulevard Widening Project, through application to the St. Lucie Transportation Planning Organization and City of Port St. Lucie Resolution 18-R42. FDOT is pleased to assist with completing these improvements. Please see below for more information on detours required for drainage work.

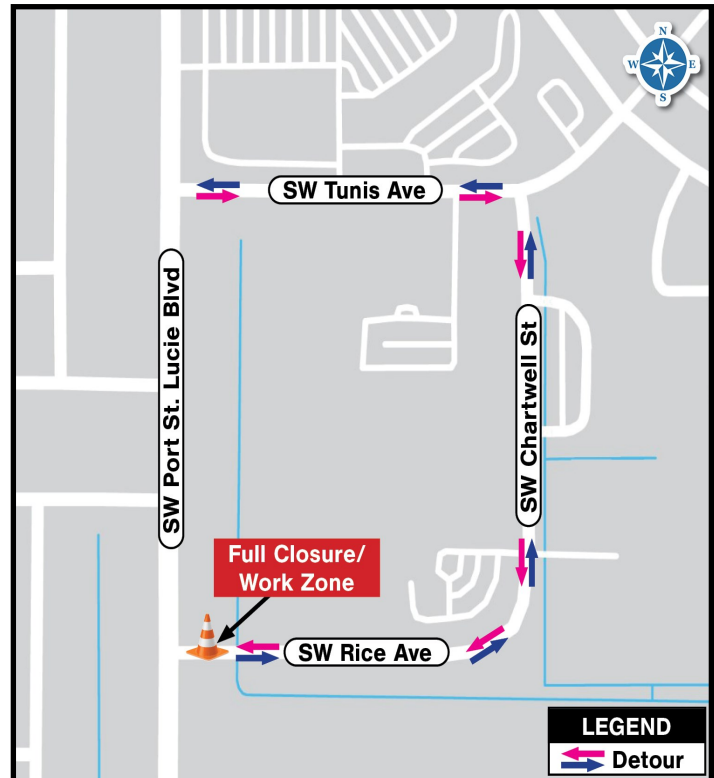
Construction Cost: \$11,570,179 Construction Start: January 27, 2022 Anticipated Completion: Summer 2024

DRAINAGE WORK ACROSS SW RICE AVENUE AT SW PORT ST. LUCIE BOULEVARD

- Beginning at 8 a.m. Monday, November 27, 2023, SW Tunis Rice Ave. at SW Port St. Lucie Blvd., will be closed around-the-clock through approximately 3 p.m. Friday, Dec. 1, 2023, for drainage work across the roadway. Monday, Dec. 4 through Friday, Dec. 8 will be used as contingency dates if needed.
- Northbound and southbound SW Port St. Lucie Blvd. to eastbound SW Rice Ave. will be detoured via SW Tunis Ave. and SW Chartwell St. to SW Rice Ave.
- Westbound SW Rice Ave. motorists will be detoured via SW Chartwell St. and SW Tunis Ave. to SW Port St. Lucie Boulevard.

PROJECT IMPROVEMENTS

- Widen SW Port St. Lucie Blvd. from a two-lane undivided roadway to a four-lane divided roadway
- Install three (3) new signalized intersections with mast arms at SW Alcantarra Blvd., SW Tulip Blvd., and SW Tunis Blvd.
- Add a right turn lane on SW Port St. Lucie Blvd.'s north approach to SW Alcantarra Blvd.
- Construct an 18-foot wide raised median with curb and gutter
- Upgrade crosswalks and curb ramps to meet Americans with Disabilities Act (ADA) standards
- Construct 8 to 10-foot wide sidewalks on both sides of SW Port St. Lucie Blvd. for pedestrian and bicycle use, and 6-foot wide sidewalks on side streets
- Install new closed drainage system, pond, signing, pavement markings, signalization, and lighting upgrades
- Add landscaping to median, install irrigation, and stamped concrete



CONTACT INFORMATION

Mark Freeman, FDOT Project Manager

mark.freeman@dot.state.fl.us or (772) 429-4904

Luke Brolmann, P.E., Project Administrator

lbrolmann@jmt.com or (772) 528-3627

Samantha Kayser, Community Outreach Specialist

WEB & SOCIAL MEDIA

Project Website: www.d4fdot.com

Facebook: www.facebook.com/MyFDOTSEFL/

Instagram/X: @MyFDOT_SEFL



FLORIDA DEPARTMENT OF TRANSPORTATION MISSION STATEMENT

The Department will provide a safe transportation system that ensures the mobility of people and goods, enhances economic prosperity, and preserves the quality of our environment and communities.

Please contact the Community Outreach Specialist, Samantha Kayser, to be added to project email notification lists. Public participation is solicited without regard to race, color, national origin, age, sex, religion, disability, or family status. Para información y preguntas en Español, por favor llame al (954) 777-4302.

Updated: 11/15/2023